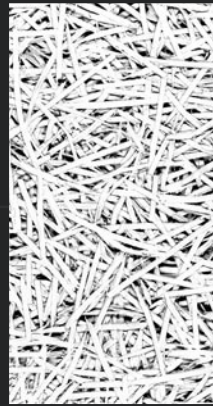


HERADESIGN® Creative Shapes

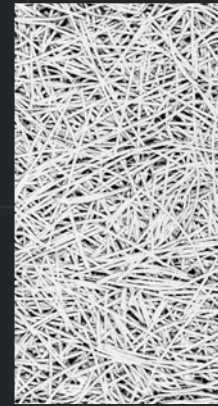
Armstrong®
CEILING SOLUTIONS

Benefits

- HERADESIGN® Creative shapes is a single layer magnesite bonded wood wool acoustic ceiling and wall panel
- Choose from a selection of eight shapes with a Fine, Superfine or Micro surface
- Excellent sound absorption performance



Pattern – Fine
(Fibre width 2mm)



Pattern – Superfine
(Fibre width 1mm)



Pattern – Micro

22 JUNE 2024

HERADESIGN® CREATIVE SHAPES





RH90
Humidity
Resistant



Scratch
Resistant



Product
Handling
Durability



Cleanable



Impact
Resistant#



Very Low
Emissions



Acoustical
Comfort

Product Data	HERADESIGN® Fine	HERADESIGN® Superfine	HERADESIGN® Micro	
Pattern				
	Fine (Fibre width 2mm)	Superfine (Fibre width 1mm)	Micro	
Edge details	Edge configuration AK-01			
Suspension systems	For ceiling applications, the mechanical fixing of the shapes is mandatory. Adhesive installation for shapes 300 on appropriate substructure on the wall up to a height of 3m.			
Thickness (mm)	25 mm			
Dimensions (mm)	Grid size 300 and 600 mm			
Colour options	Standard colours white and beige 	Pastel colours 	Solid colours 	Special colours
	<ul style="list-style-type: none"> The unique and natural structure of HERADESIGN® wood wool makes it an ideal solution for projects requiring creative colour schemes. Choose from an almost unlimited range of popular RAL and NCS colour systems. Deviations in colour and visual appearance may occur due to the rough fibre and panel surface. 			



HERADESIGN® Fine: α_w up to 0.90 / NRC up to 0.90
 HERADESIGN® Superfine: α_w up to 1.00 / NRC up to 1.00
 HERADESIGN® Micro: α_w up to 0.55 / NRC up to 0.55



Suitable for rooms with a constant humidity of up to 90%. For applications where there is a constant relative air humidity in excess of 80%, expert advice for building physics is recommended.



Conforms with NCC Spec. C1.10 as tested to AS 5637.1:2015 – Group 1, and ISO 5660 – Group 1 – S



HERADESIGN® Fine: $\lambda = 0.090$ W/mK according EN 12667
 HERADESIGN® Superfine: $\lambda = 0.090$ W/mK according EN 12667
 HERADESIGN® Micro: $\lambda = 0.100$ W/mK according EN 12667

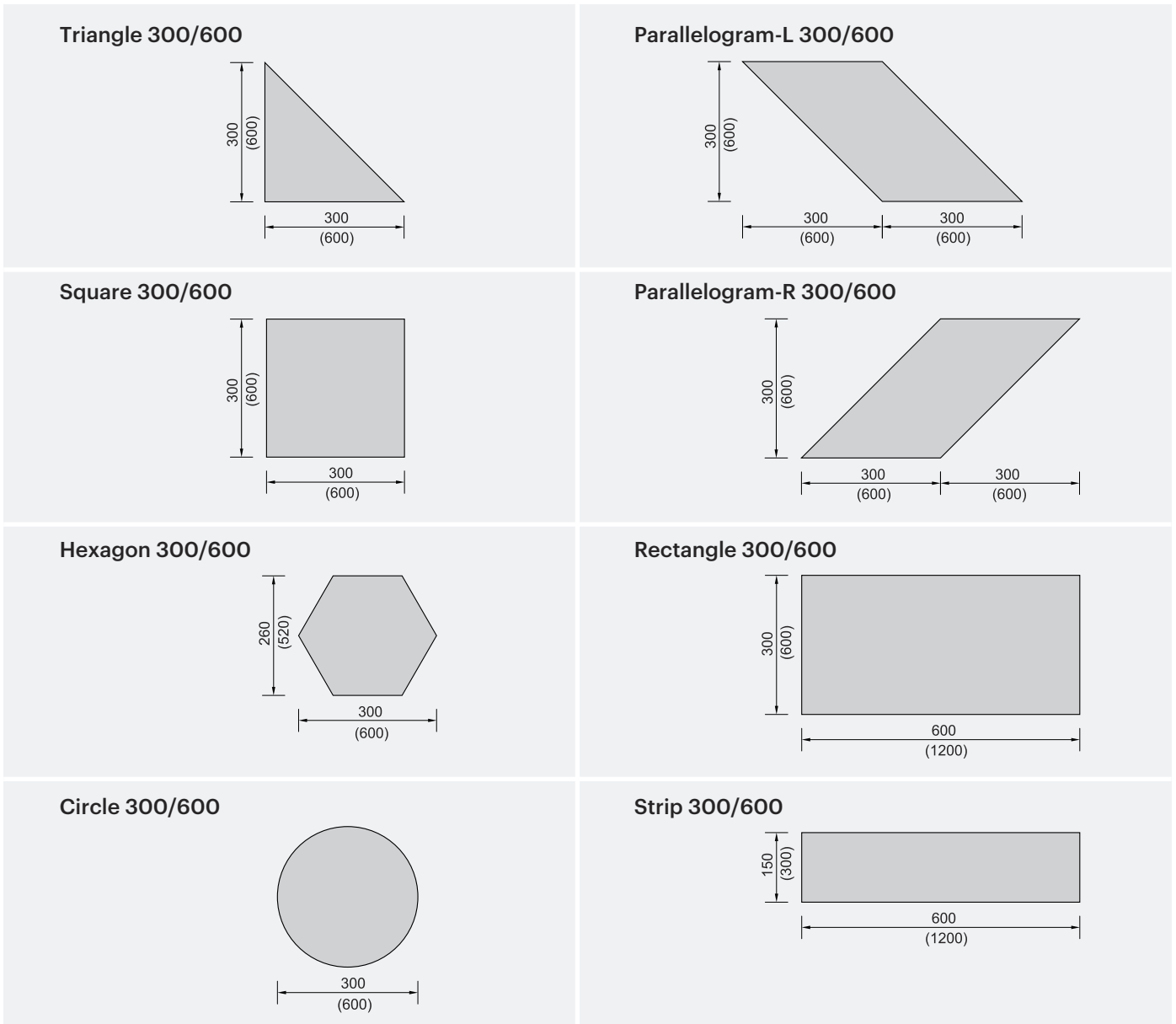


12.6 – 15.0 kg/m²

Green Star™: Potential contribution Interiors v1.3 / Design & As Built v1.3			
Indoor Environmental Quality		Materials	
Credit 9 / 10 ACOUSTIC COMFORT	Credit 12 / 13 INDOOR POLLUTANTS	Credit 20.1 / 20.2 RESPONSIBLE BUILDING MATERIALS – Certified Timber	Credit 21-D / 21-D SUSTAINABLE PRODUCTS – Environmental Product Declarations
✓	✓	✓	✓



Product Range



Technical Data

Description		Requirement per m ² of wall or ceiling area					
		Module 300 ¹⁾			Module 600 ²⁾		
		Area [m ²]	Pcs./m ²	Pcs./carton	Area [m ²]	Pcs./m ²	Pcs./carton
	Triangle	0.045	22.22	28	0.180	5.56	40
	Parallelogram	0.090	11.11	7	0.360	2.78	10
	Square	0.090	11.11	14	0.360	2.78	20
	Rectangle	0.180	5.56	7	0.720	1.39	10
	Strip	0.090	11.11	14	0.360	2.78	20
	Circle	0.070	11.11	14	0.283	2.78	20
	Hexagon	0.058	17.25	14	0.234	4.27	20

1) Raft 300: max. 20 cartons per pallet. 2) Raft 600: max. 3 cartons per pallet.

Notes on installation guidelines

HERADESIGN® creative shapes are produced, checked and delivered to site with great care.

During the delivery, please always check:

- Number of packages, (pallets, cartons, m²)
- Compare the contents of the packages with the delivery note and the labels on the packaging
- Accessories: plugs, screws, touch up paint, profiles or other items
- Are the goods or parts damaged?

IMPORTANT: Any transport damages, product quantity or quality issues must be checked and approved by the driver. The dealer who shipped the goods must be informed immediately.

Important factors for a successful and attractive HERADESIGN® creative installation are exact processing and suitable working conditions. Careful installation and good quality products ensure a satisfactory result.

All HERADESIGN® Creative interior installations must only be carried out under controlled humidity and temperature conditions. All building activities which create dust must be completed before the start of installation.

Check the HERADESIGN® creative shapes for damage before installation. Damaged tiles should not be installed.

Transport to site, unpacking the HERADESIGN® creative products and handling should always be carried out with due care. Always work with clean hands and clean tools. We recommend wearing clean gloves.

Before starting installation, check the underlying surface for loadbearing capacity.

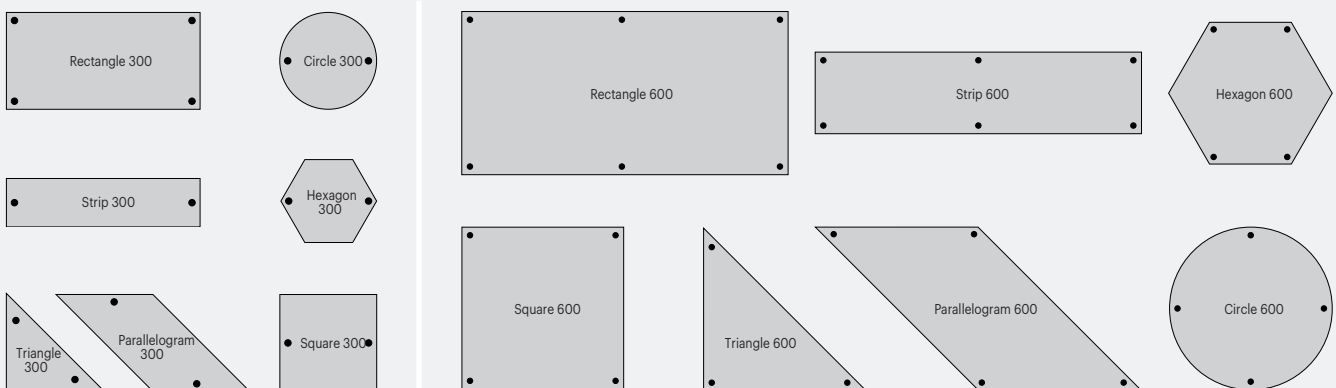
When required, the shapes can be cut using a circular saw, table saw or jigsaw. Remove any dust with a soft brush.

Slight damage to the tile surface as well as cut edges are carefully painted after installation. This is done with a fine brush. Only apply a small amount of paint to avoid colour differences. Cut edges or later produced fibres can be painted with a short-haired roller (e.g. microfibre roller 13mm, paint roller 10mm, etc.) or brush.

When using screws to install HERADESIGN® Creative, the HERADESIGN® Bitholder 'easy' is the idea tool for the exact insertion of the screws. The required screw depth must be set on a sample tile before installation.

Variant of screw installation on the wall and on the ceiling

- Alternatively, HERADESIGN® creative acoustic shapes can be screw fixed onto 60 x 27 x 0.6mm CD profiles or 30 / 60mm wooden lathes.
- Screw type: HERADESIGN® screws, 50 x 4.5mm.
- Alternatively, grooved or resin-treated staples may be used. Staple width > 8mm, staple length > 50mm.



The location of the screws can vary depending on the pattern and substructure when using 300mm shapes.

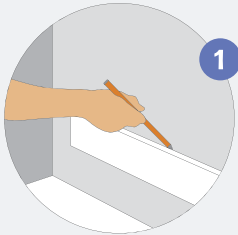
Variant: Adhesive installation on the wall

- The following installation guidelines refer to the adhesive installation of HERADESIGN® creative acoustic rafts in 300mm shapes on the wall up to a maximum wall height of 3m. For installation with HERADESIGN® screws, follow the corresponding procedure.

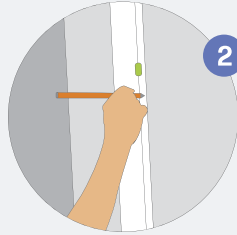
Important: The underlying surface must be able to take

the load, level, dry and dust-free. Handling and underlying surface temperature min. +7°C.

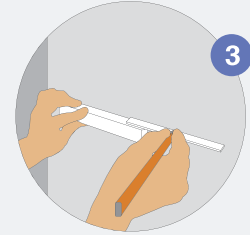
- Surfaces with unknown properties should be checked for their adhesion.
- The general guidelines for the installation of HERADESIGN® wood wool acoustic tiles must be adhered to.



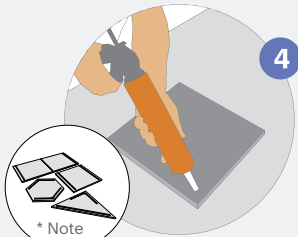
1 | MARK
A horizontal guide.



2 | MARK
A vertical guide.



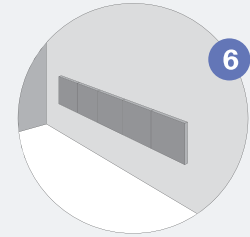
3 | DEFINE THE SHAPES
Depending on the type of shapes to be adhered, several guides in a 300 mm or 600 mm shapes may be necessary.



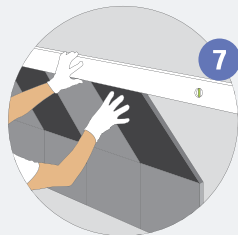
4 | APPLY ADHESIVE
Apply a line of AMF Ceiling adhesive to the acoustic raft. Processing time: approx. 15 min. Amount: approx. 1 cartridge/m².
* Note: Illustrative example of the adhesive application lines.



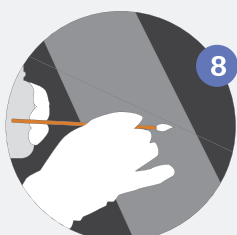
5 | ALIGN
The rafts to the shapes and adhere to the underlying surface by applying pressure.



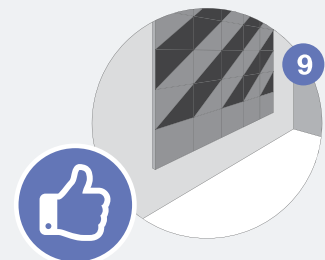
6 | INSTALL THE FIRST ROW
The first row must be installed accurately. To ensure the elements don't slip and to ease alignment we recommend using a horizontal stop bar. Alternatively, the first row can be secured with screws or wall tacks.



7 | FURTHER ADHESIVE
The next rows from the bottom are positioned and adhered. The position of the rafts should be checked at regular intervals with a spirit level.



8 | CHECK
After completion, any colour damage or fibre breakage may be improved with a small brush and the supplied repair paint.



9 | ENJOY
Complete wall installation.

Contact us

Armstrong Ceiling Solutions (Australia) Pty. Ltd.

NSW / ACT
(02) 9748 1588

VIC / TAS
(03) 8706 4000

QLD / NT
(07) 3809 5565

Armstrong
CEILING SOLUTIONS