



# DataStruct®

## Installation Instructions

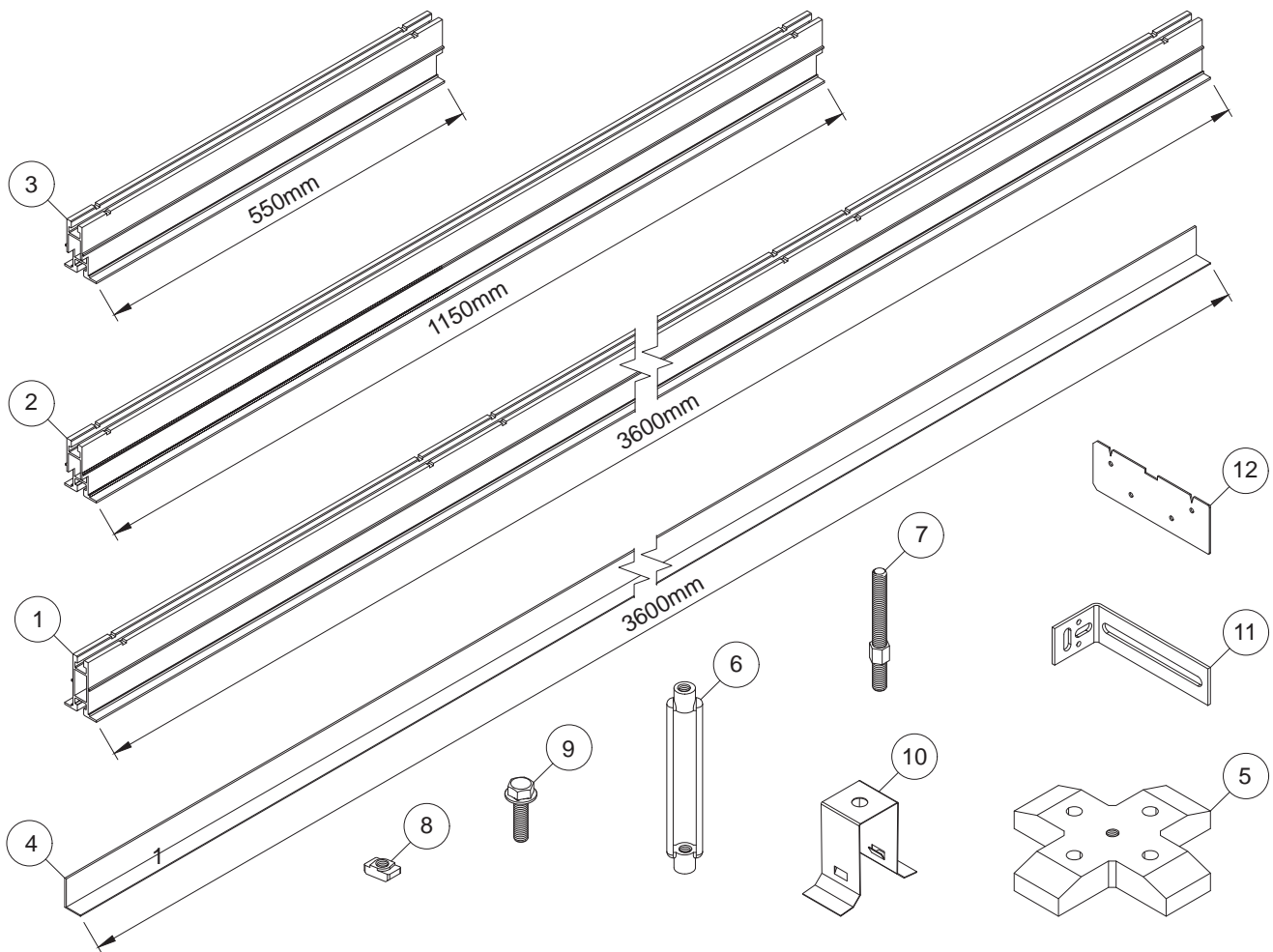
# Table of Contents

PAGE	CONTENT
2	TABLE OF CONTENTS
3	STANDARD COMPONENTS
4	SETTING OUT
5	PERIMETER DETAILS
6	INSTALLING PERIMETER GRID
7	INSTALLING THREADED ROD DROPPERS
8	INSTALLING MAIN RUNNERS
11	INSTALLING CROSS RUNNERS
12	INSTALLING CEILING PANELS
12	FIELD CUTS
13	INSTALLING THIRD PARTY ACCESSORIES
14	GRID ATTACHMENTS

THIS GUIDE SHOULD BE USED IN CONJUNCTION WITH TECHNICAL STANDARD AS/NZS 2785:2020, SEISMIC DESIGN IN ACCORDANCE WITH AS 1170.4 AND OTHER PROJECT SPECIFIC DESIGN DOCUMENTATION.

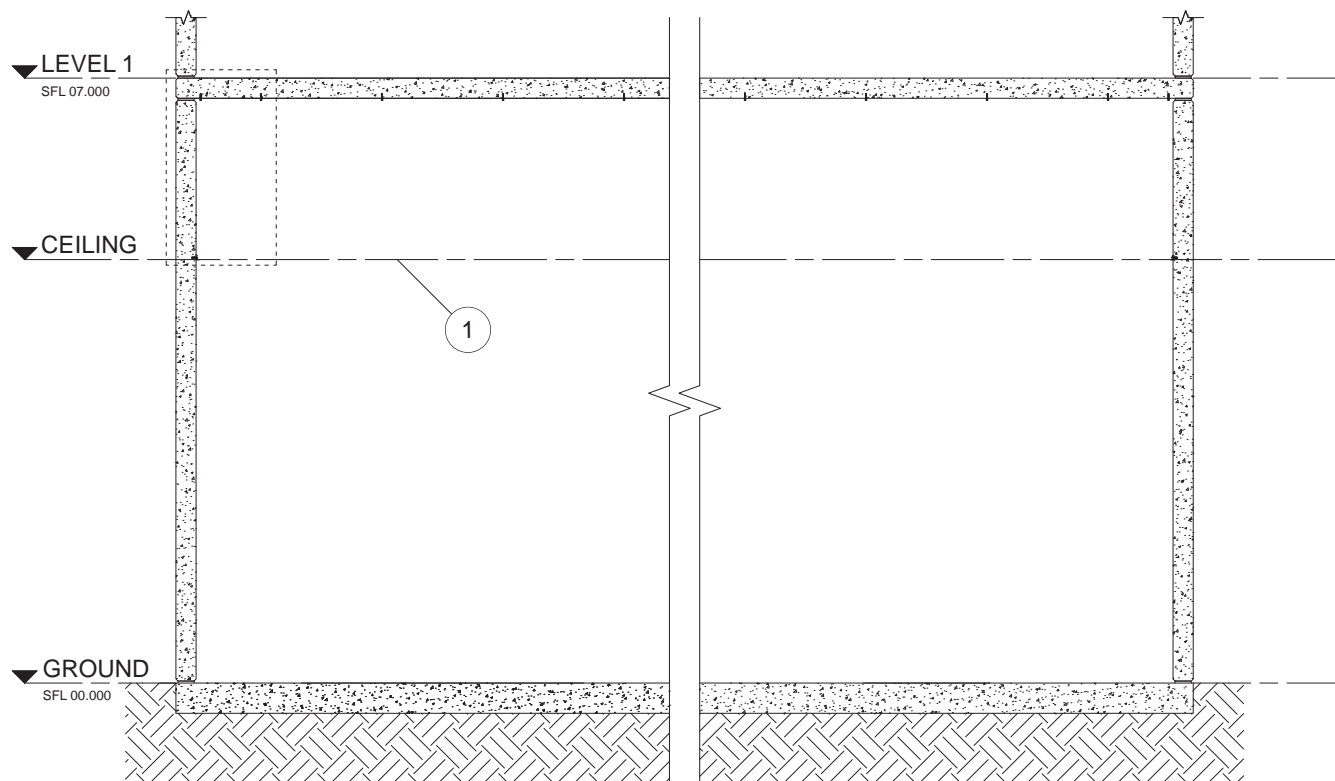
# Standard Components

Item	Product	Code Description
1	DWDS75MR3600GW	Dataworks Datastruct Heavy Duty 75mm Main Runner 3600 Global White
2	DWDS75CR1200GW	Dataworks Datastruct Heavy Duty 75mm Cross Runner 1200 Global White
3	DWDS75CR600GW	Dataworks Datastruct Heavy Duty 75mm Cross Runner 600 Global White
4	ALSWA2GW	Seismic Heavy Duty Aluminium Wall Angle Global White
5	DWDSHDGC	Dataworks Datastruct Heavy Duty Grid Connector Mill Finish
6	FSTBM8100SS	Turnbuckle M8 x100 304 Stainless Steel
7	FSDEBM82050SS	Double Ended Bolt M8 x RH20 x LH50 304 Stainless Steel
8	FSTSRNM8SS	T-Slot Rhombic Nut M8 304 Stainless Steel
9	FSSFHBM830SS	Serrated-Flange Hex Head Bolt M8x30 304 Stainless Steel
10	DWDSHDC	Panel Hold Down Clip
11	UNI200	Slotted Angle Bracket
12	ALMRJL	Aluminium Main-Runner Joiner Large



# Setting Out

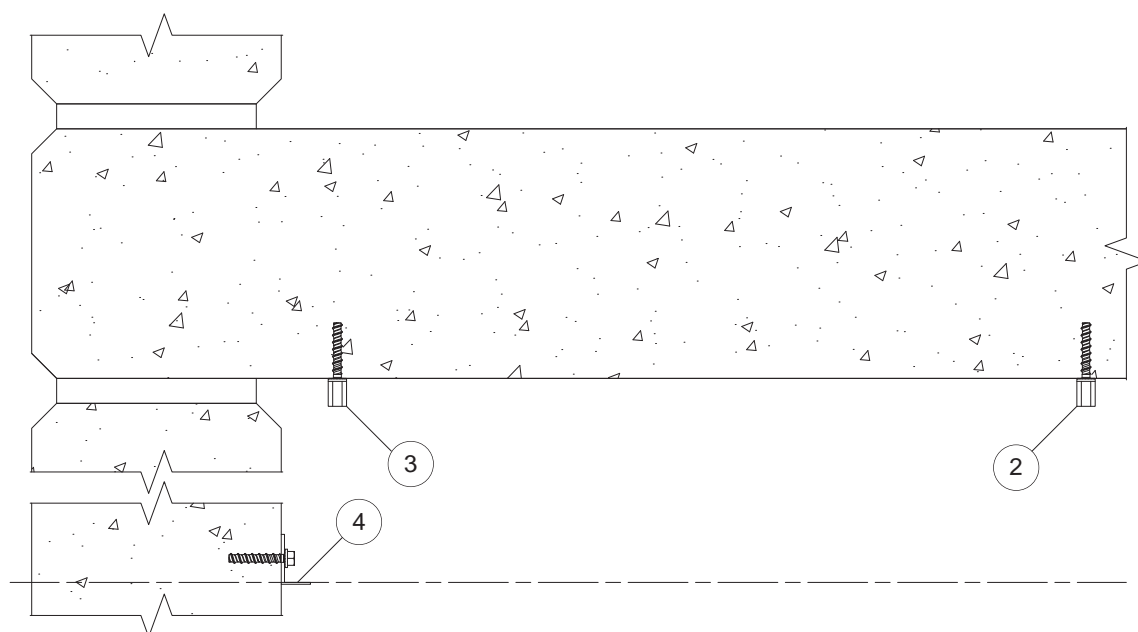
## 1. Establish ceiling grid level.



## 2. Set out grid location and install anchor points.

## 3. Install perimeter hanger anchor positions.

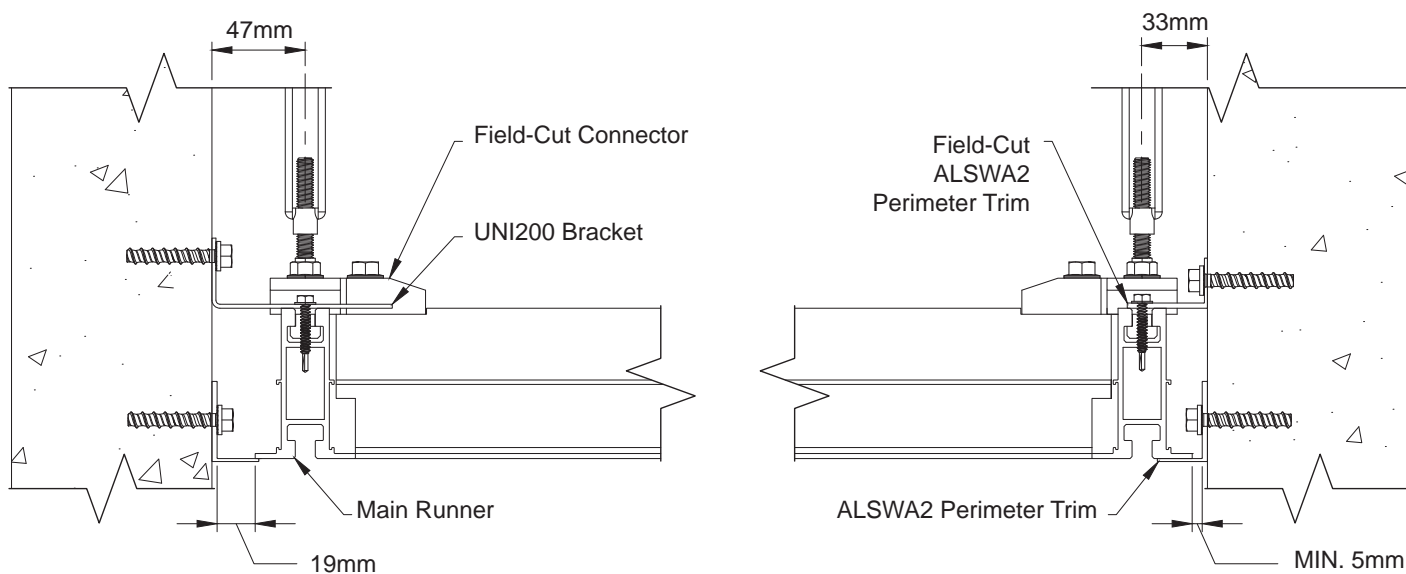
## 4. Install perimeter angles.



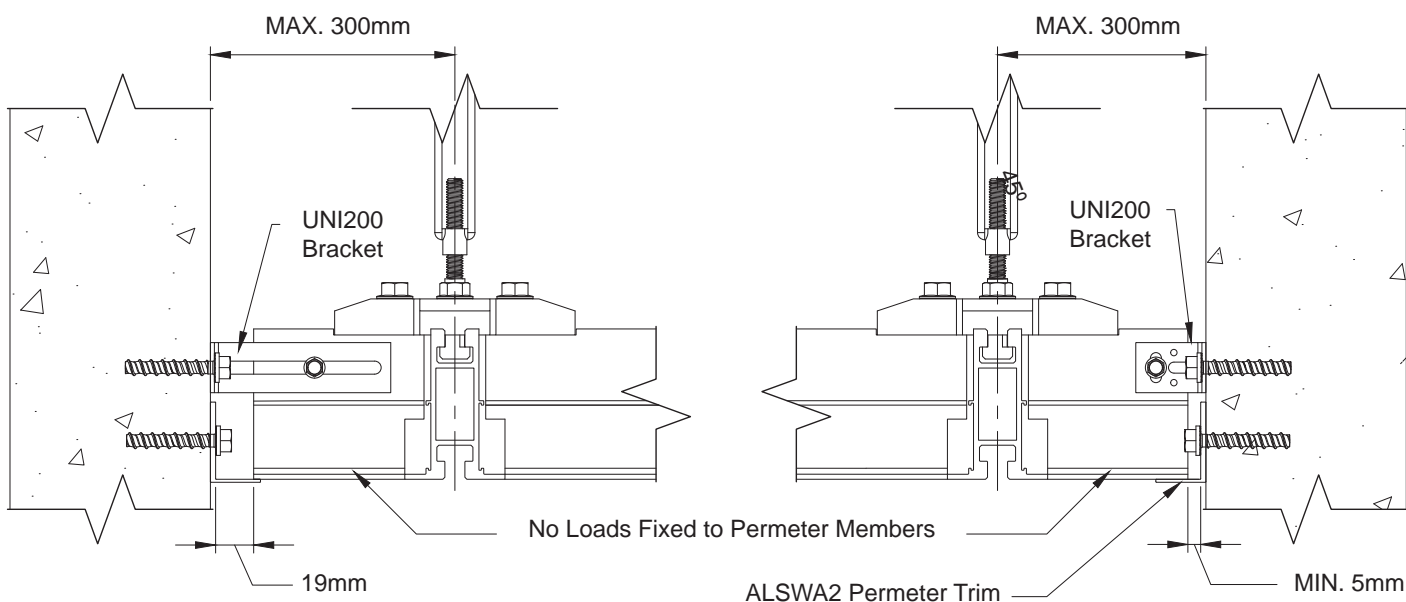
**N.B. Ensure top fasteners are installed in accordance with manufacturer guidelines and rated per AS 1170.4 Seismic design.**

# Perimeter Details

**5. Install fixed/floating Main Runners around perimeters as shown.**



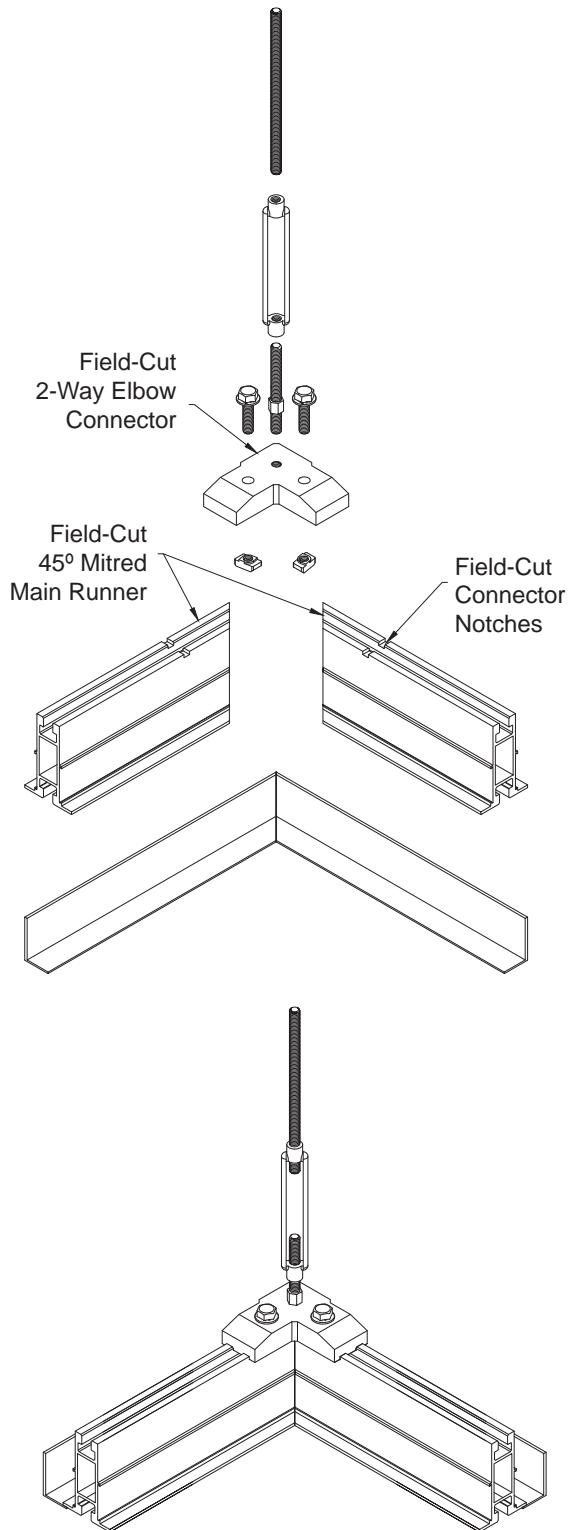
**6. Install fixed/floating without Main Runners around perimeter as shown below.**



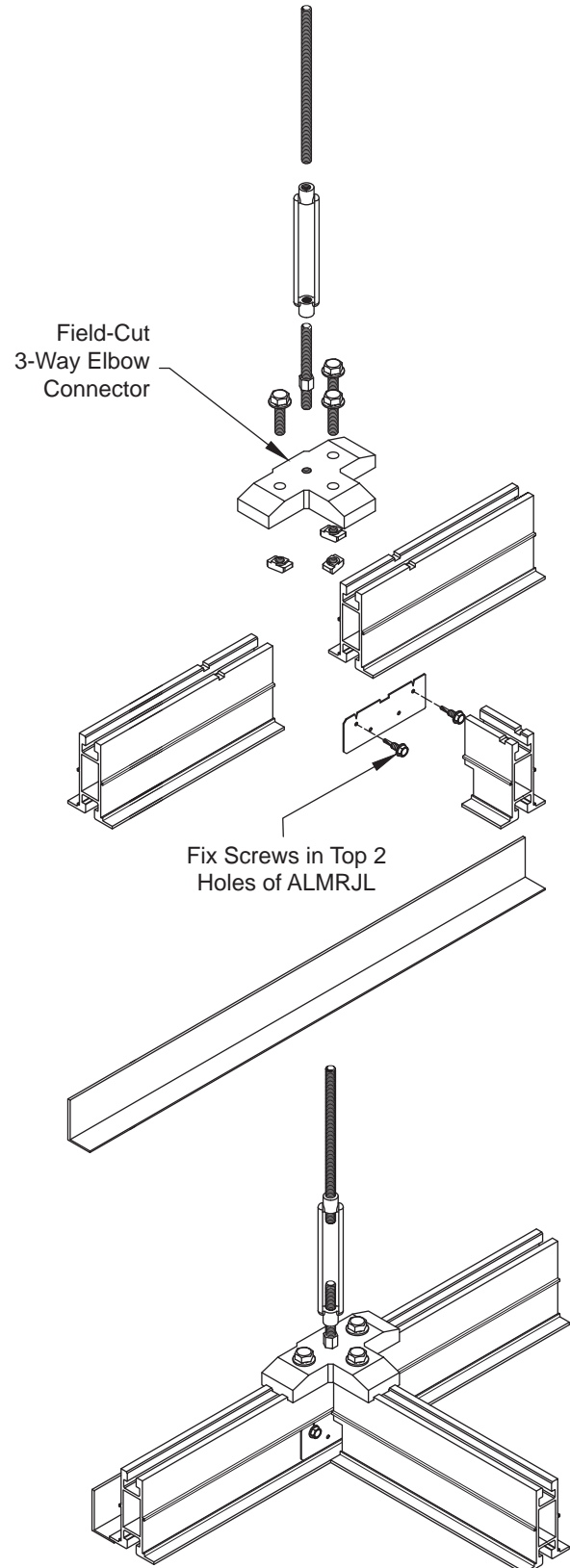
**N.B. Install fixed/floating edges in accordance with AS 1170.4 Seismic design.**

# Installing Perimeter Grid

7. Install corner perimeter grid as shown below.

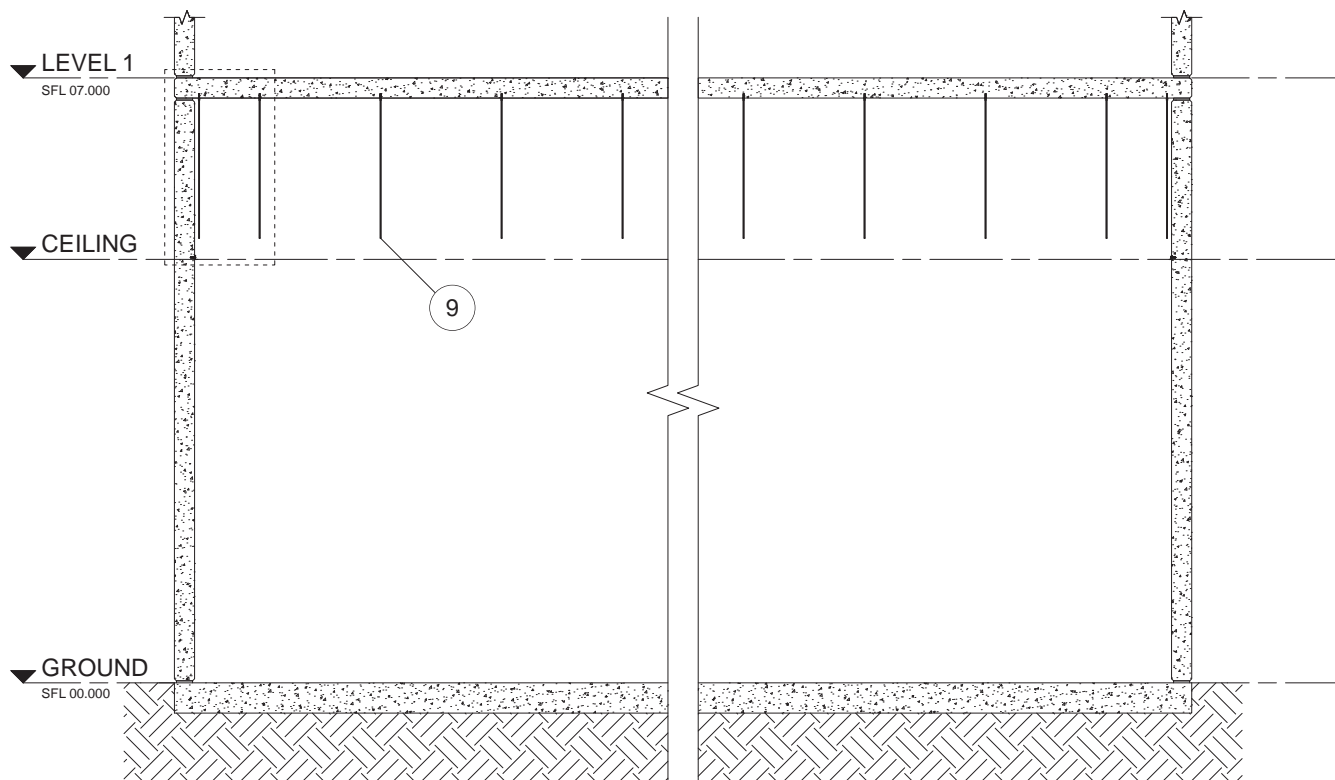


8. Install perimeter Main Runners as shown below.

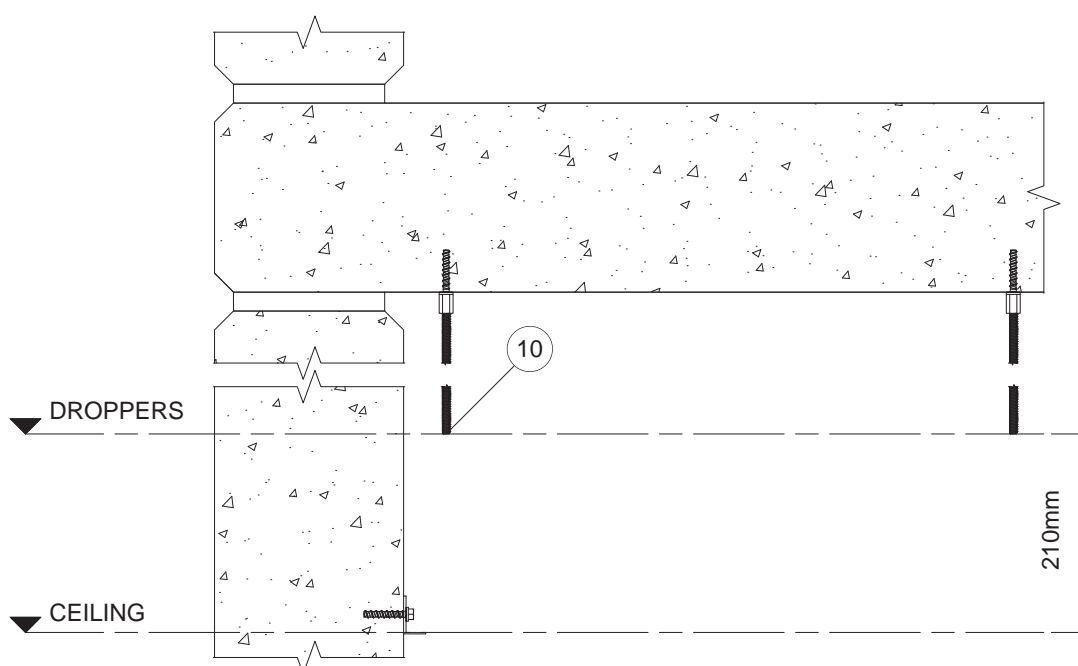


# Installing Threaded Rod Droppers

## 9. Fit M8 304 Stainless Steel Threaded Rod into anchors.

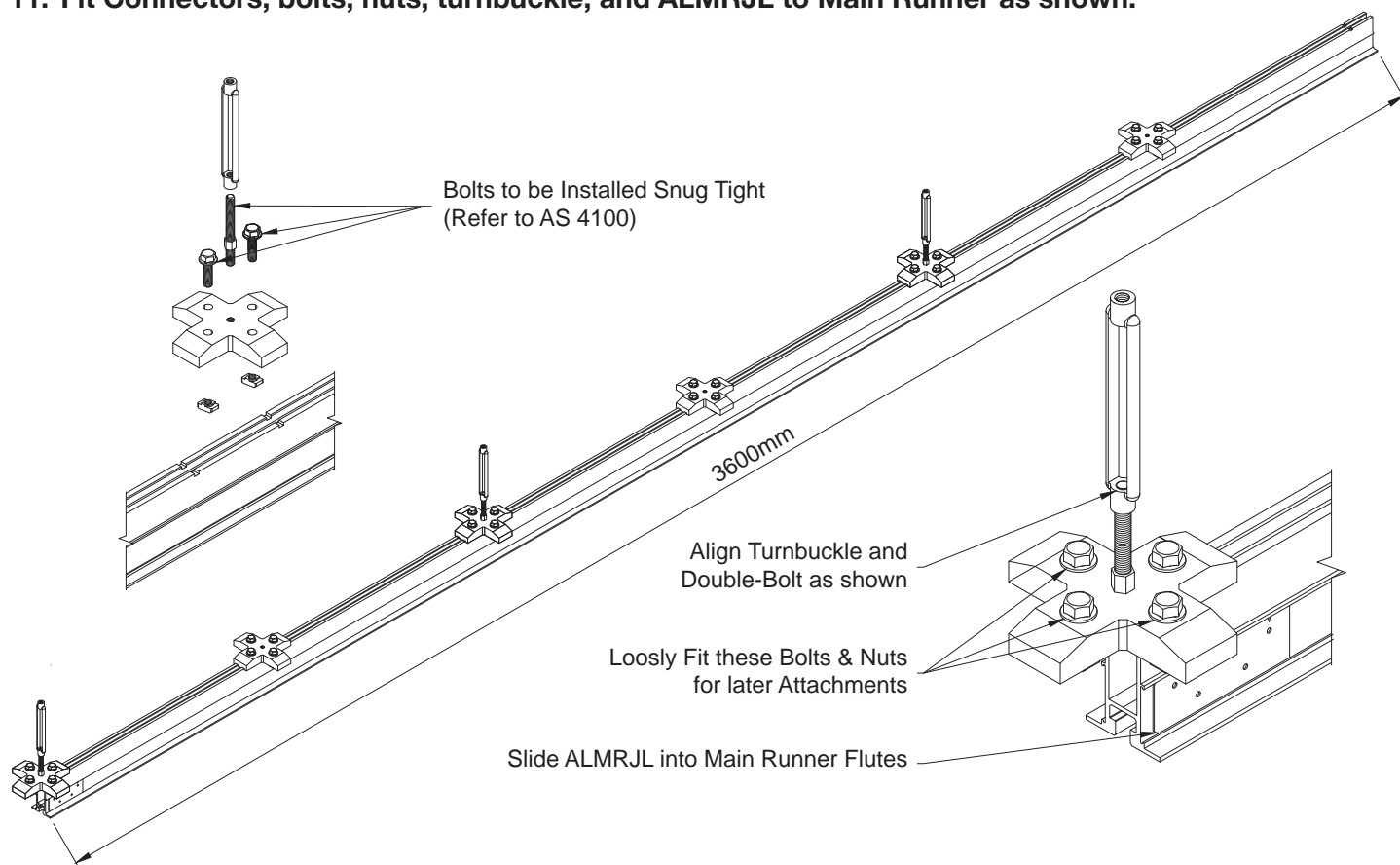


## 10. Align underside of threaded rod 210mm above ceiling level.

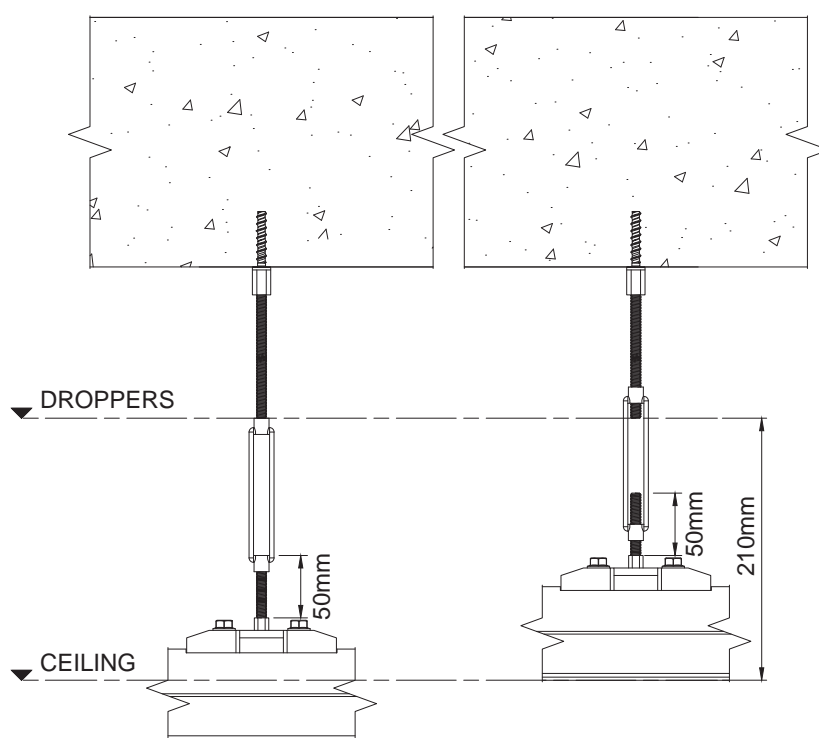


# Installing Main Runners

**11. Fit Connectors, bolts, nuts, turnbuckle, and ALMRJL to Main Runner as shown.**



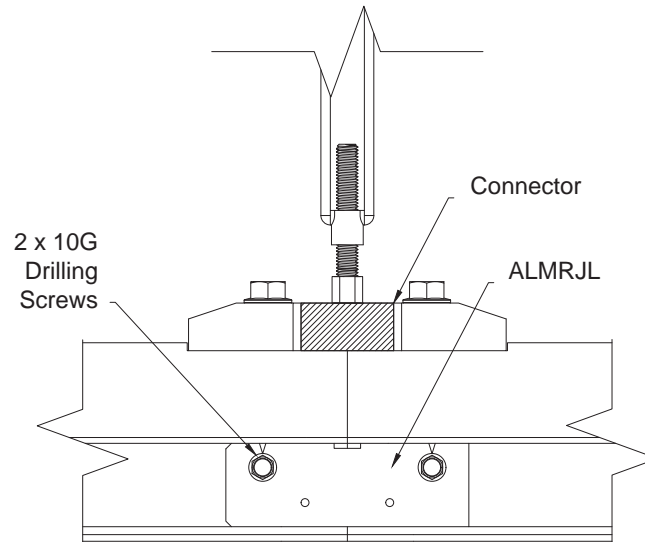
**12. Connect turnbuckle with threaded rods and raise grid to ceiling level as shown.**



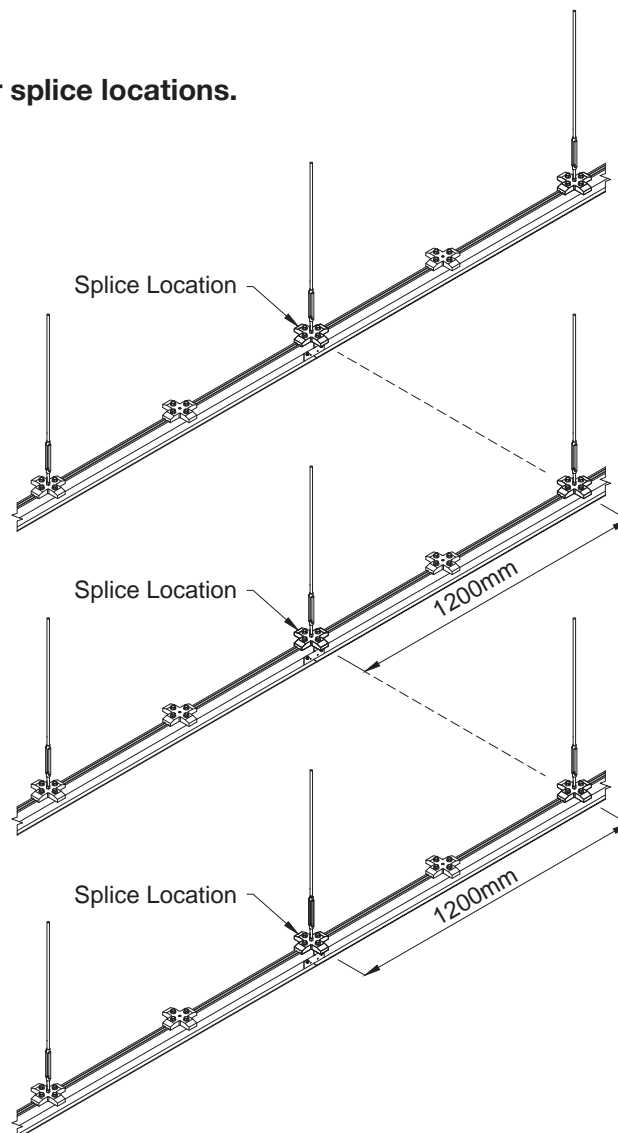


# Installing Main Runners

13. Use Connector and ALMRJL to splice main runners.

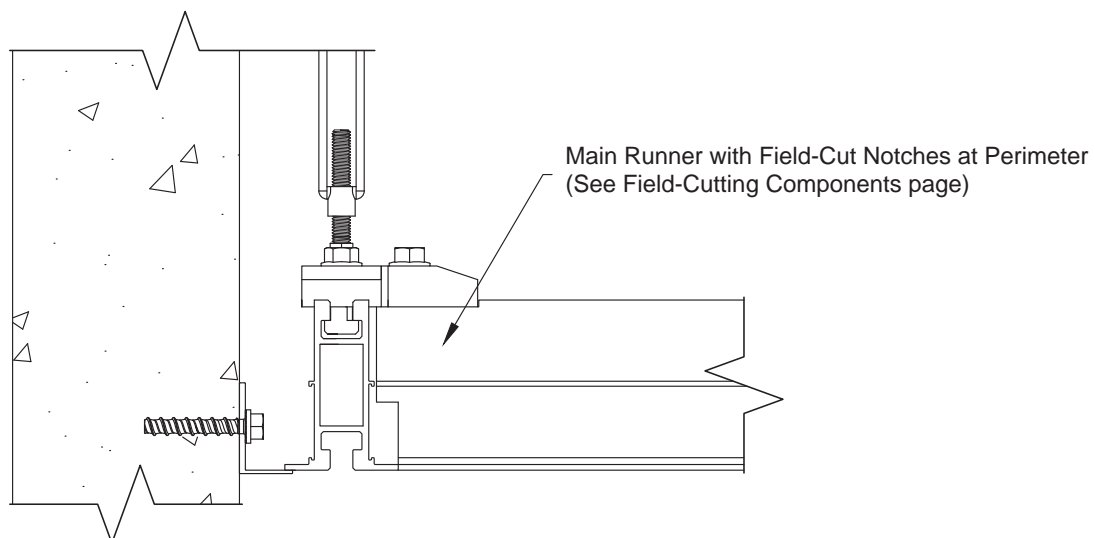
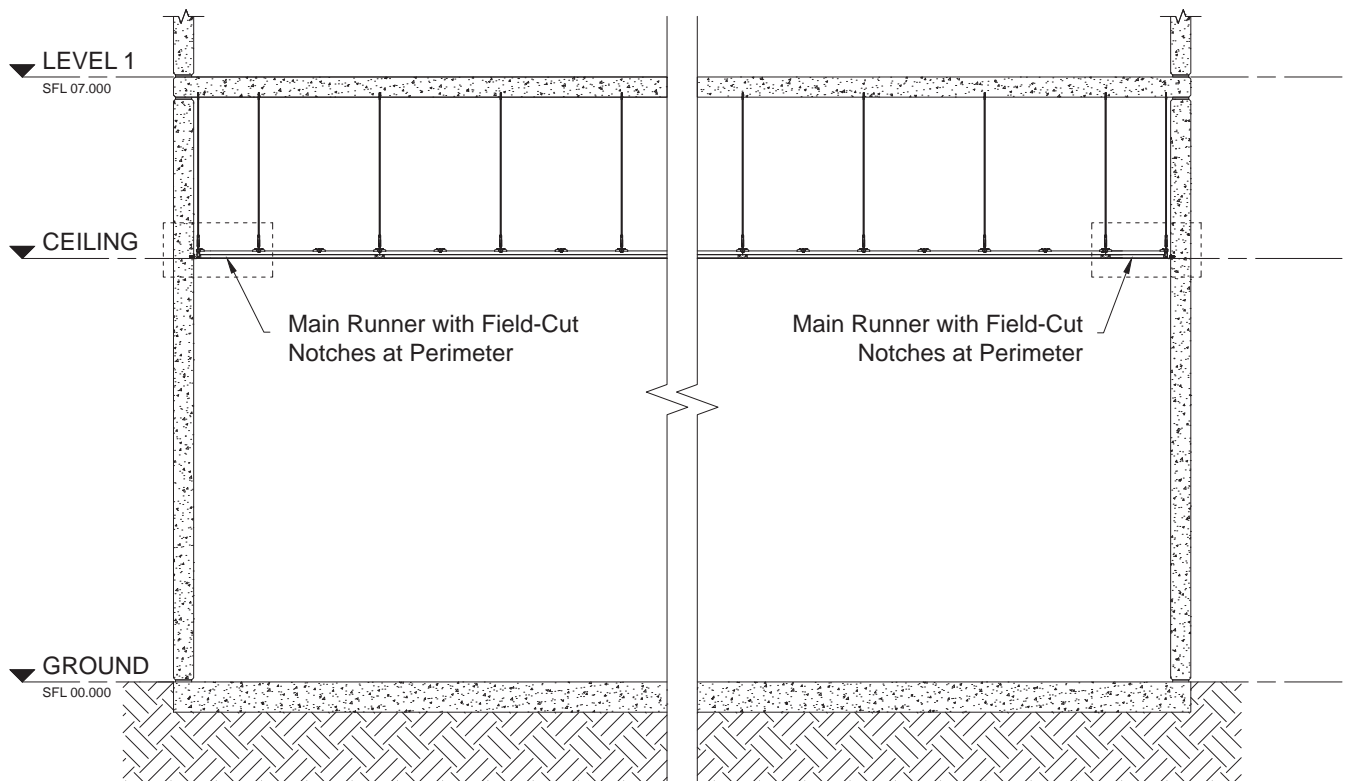


14. Stagger all Main Runner splice locations.



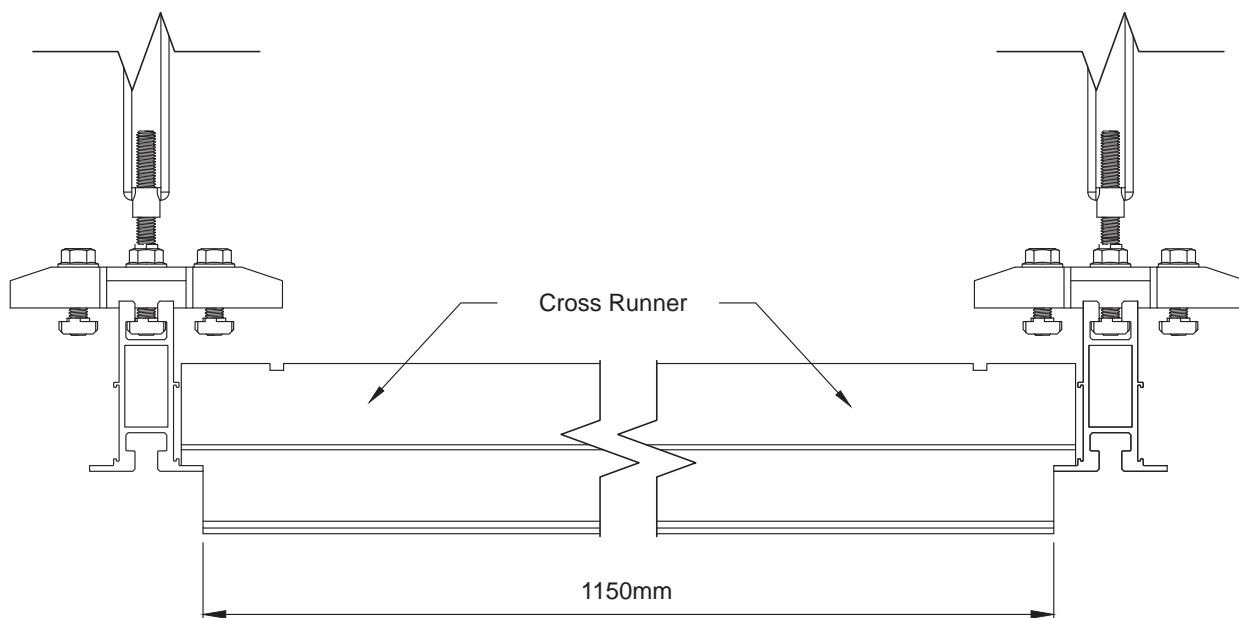
# Installing Main Runners

## 15. Field-cut Main Runners, where required, to connect to perimeter members.

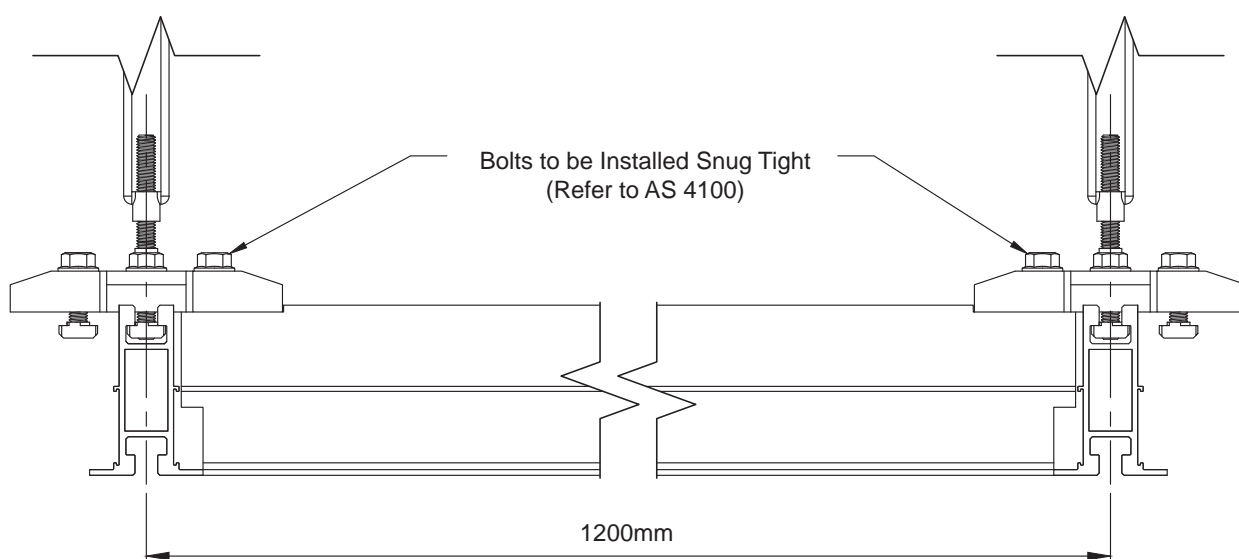


# Installing Cross Runners

16. Place cross runner between Main Runners and underneath connectors as shown (DWDS75CR1200GW shown).

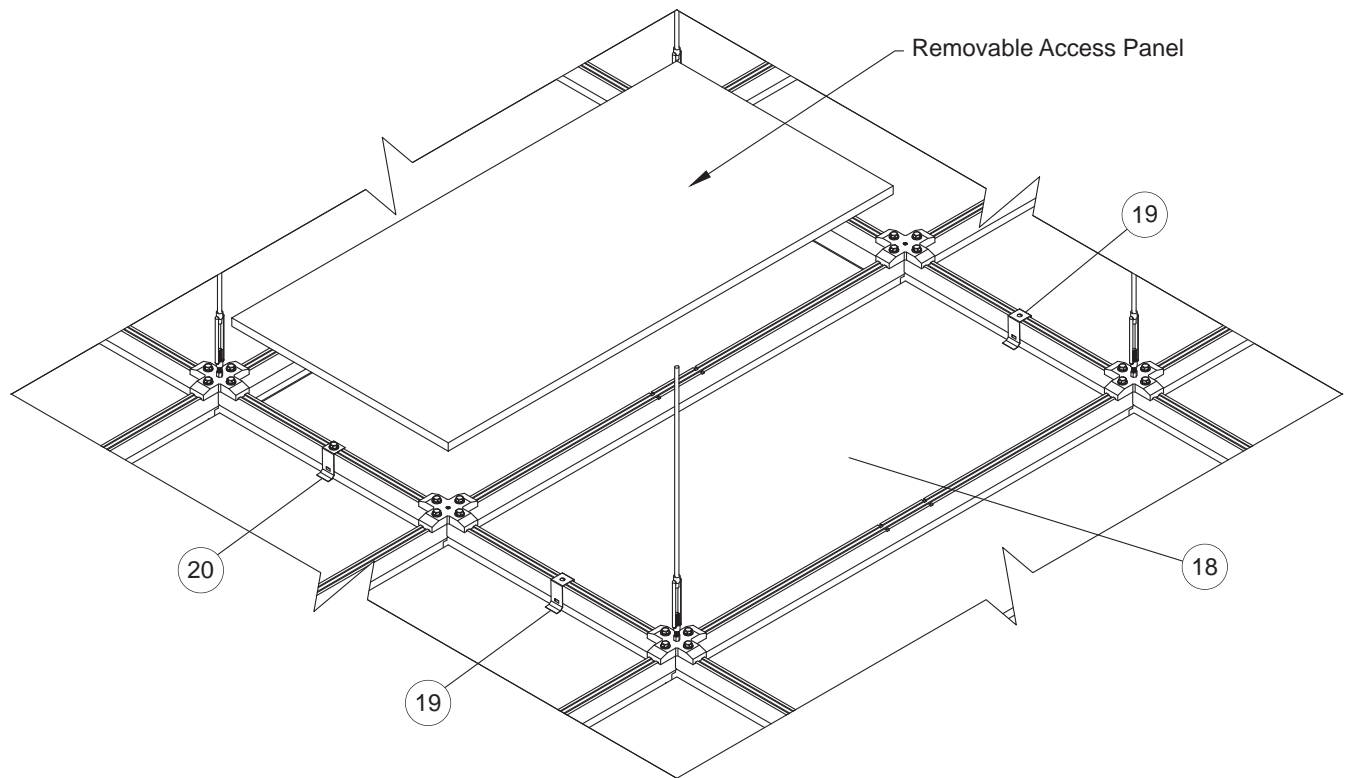


17. Align Cross Runner notches with connector and tighten bolts.

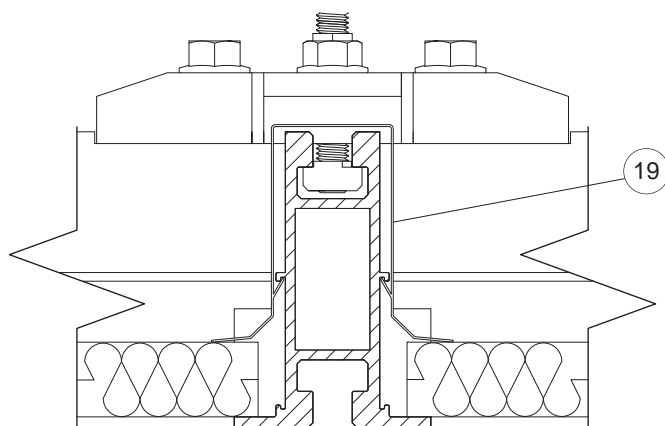


# Installing Ceiling Panels

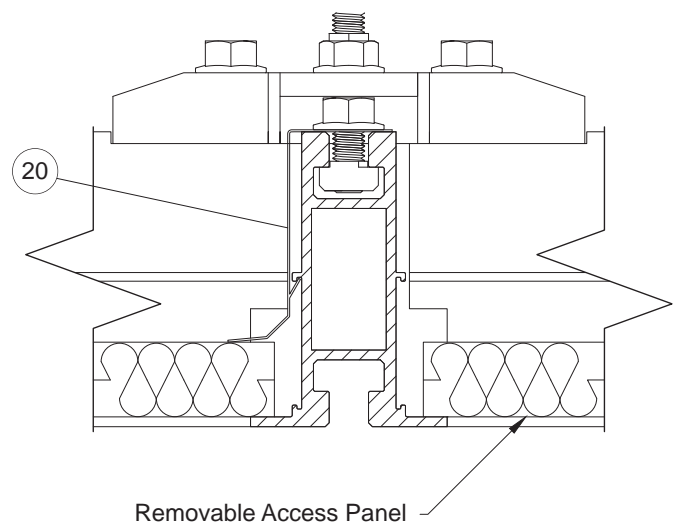
18. Install Mineral Fibre ceiling panels into grid.
19. Fit DWDSHDC Hold Down Clips on two edges of each panel.
20. Where access panels are required, field-cut DWDSHDC and install using M8x16 bolt and rhombic nut.



**Hold Down Clip on Two Edges**

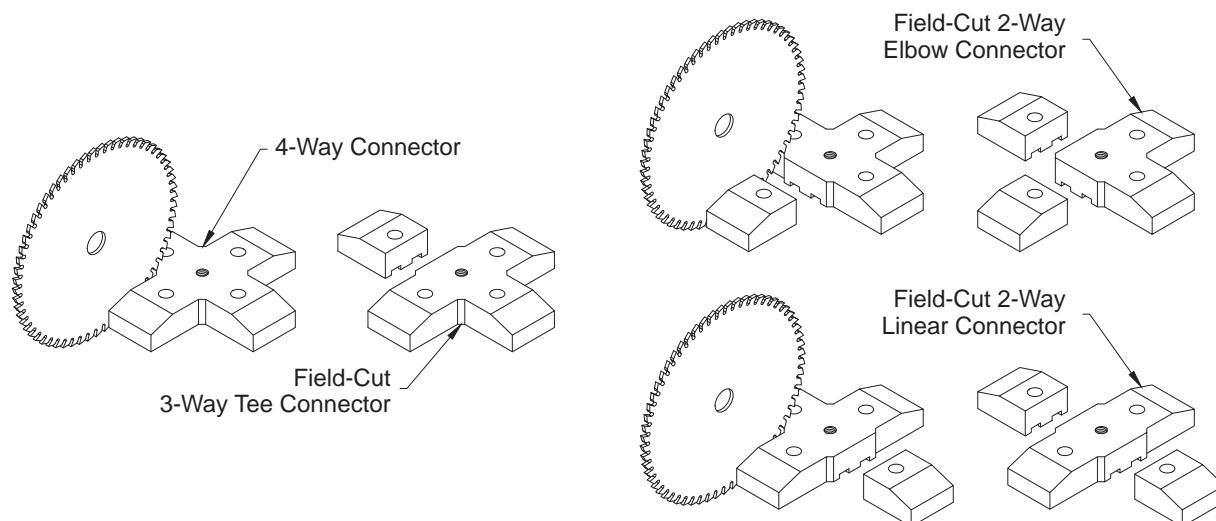


**Hold Down Clip with Access Panel**

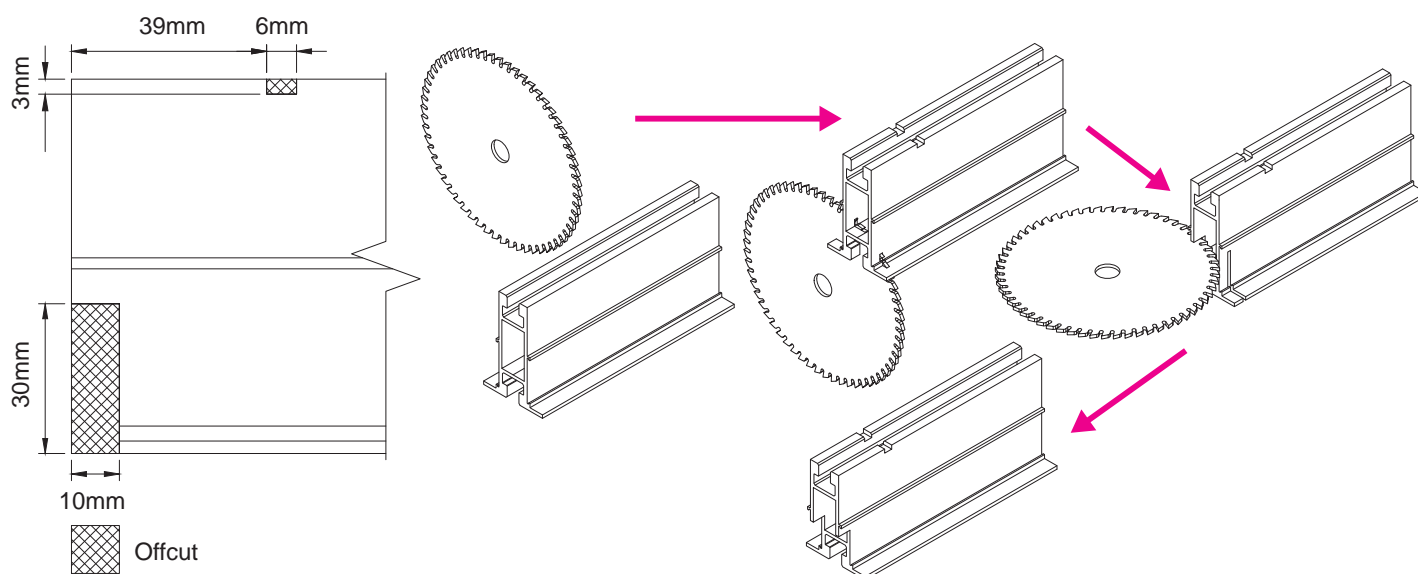


# Field-Cutting Components

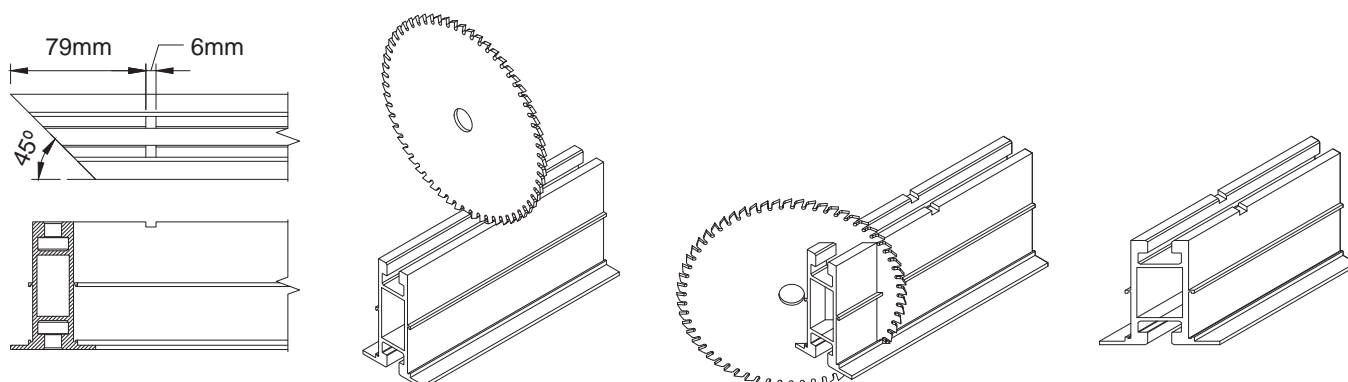
## 21. Field-Cutting Connectors



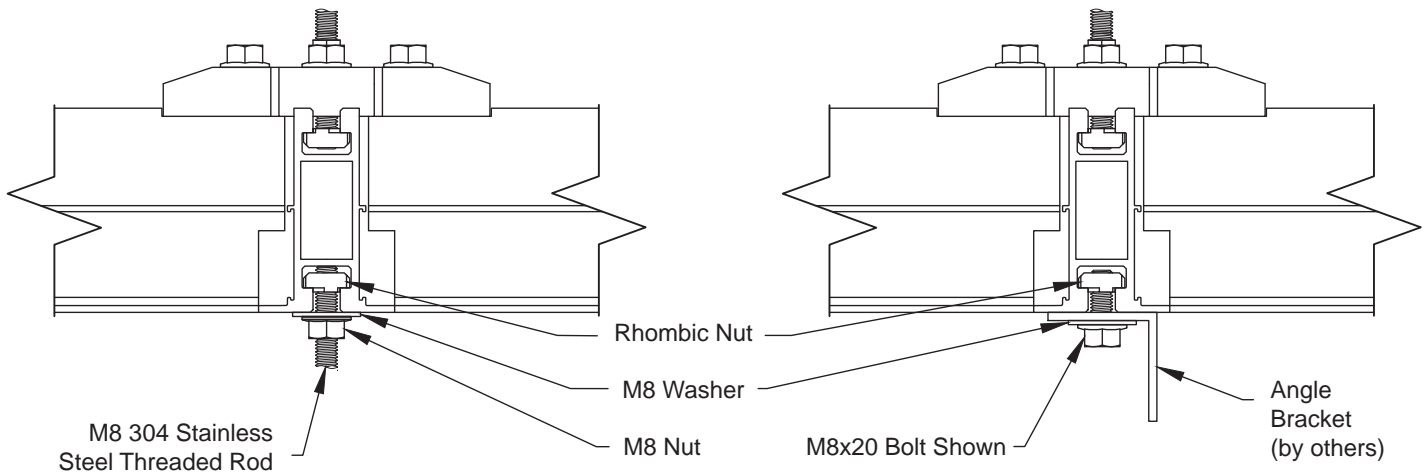
## 22. Field-Cutting Connection Notches



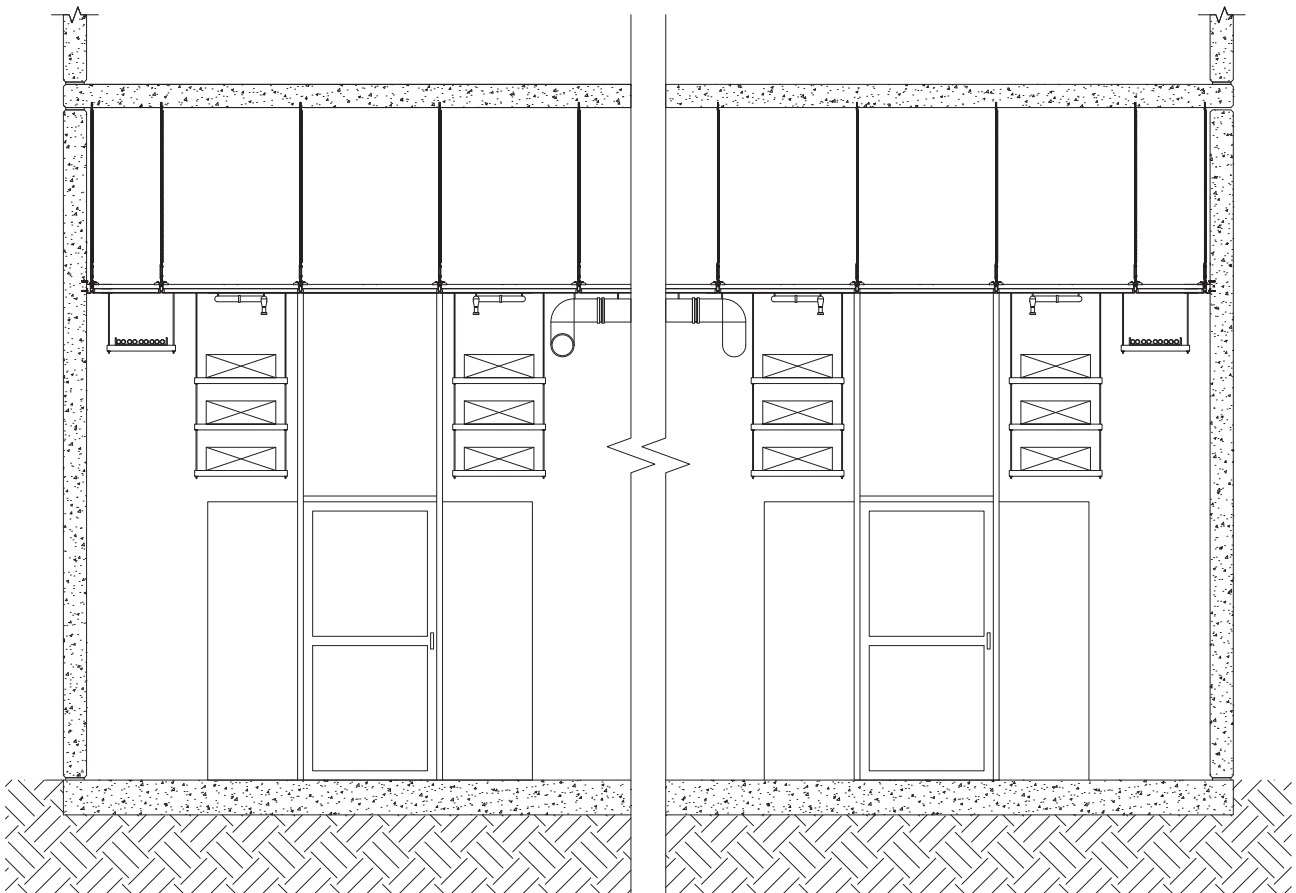
## 23. Field-Cutting Mitred Main Runners



- 24. Fit M8 Threaded Rod into ceiling grid using rhombic nut, M8 washer, and M8 nut as shown. All fasteners to be 304 Stainless Steel, and to be installed snug tight (Refer to AS 4100).**



- 25. Attach services and third-party components as required.**





## CONTACT US

NSW / ACT  
(02) 9748 1588

VIC / TAS  
(03) 8706 4000

QLD / NT  
(07) 3809 5565

[info@armstrongceilings.com.au](mailto:info@armstrongceilings.com.au)

DISTRIBUTED BY

**Armstrong**<sup>®</sup>  
CEILING SOLUTIONS