

WoodWorks™ Large Panels

DO NOT REMOVE PRODUCT FROM THE CARTON UNTIL YOU HAVE READ THESE INSTRUCTIONS IN THEIR ENTIRETY.

1. GENERAL

1.1 Product Description

WOODWORKS Large Panels consist of perforated and unperforated, 1200 x 2400, 1200 x 1200 and 2400 x 600 panels designed to be face fixed, concealed fixed to fixing rail or fixed via a split aluminium batten.

1.2 Surface Finish

WOODWORKS Large Panels are made from MR MDF and bonded between two layers of Melamine or Wood Veneer – which has a clear lacquer finish.

All edges are factory finished.

1.3 Storage and Handling

The ceiling components shall be stored in a dust-free and dry interior location and shall remain in crates prior to installation to avoid damage. The crates shall be stored in a flat, horizontal position. The protectors between panels should not be removed until installation. Proper care should be taken when handling to avoid damage and soiling. It is important to ensure that the panels are not subjected to any mechanical influences, such as damage caused by the underlying surface.

Panels must not be exposed to extreme temperatures, for example, close to a heating source or near a window where there is direct sunlight. The installation company is responsible for the careful storage of panels

1.4 HVAC Design & Operation

Proper design for both supply air and return air, maintenance of the HVAC filters and building interior space are essential to minimize soiling. Before starting the HVAC system, make sure supply air is properly filtered and the building interior is free of construction dust.

1.5 Site Conditions: Temperature & Humidity during Installation

Armstrong WOODWORKS ceilings are interior finishes and conditions during the installation should reflect this. Armstrong Ceilings recommends during installation that relative humidity should not exceed 99%, within a temperature range of 0° to 49° C and with the absence of any “standing water”. Conditions following completion should be maintained as such, including proper ventilation

of the plenum in high moisture areas and all windows and doors should remain in place.

Because of the risk of soiling, the installation of WoodWorks Large Panels should only take place after the completion of any work generating large amounts of dust. The wearing of clean gloves is recommended for installation work. The ceiling installer is responsible for the satisfactory installation of the ceiling and adherence to industry best practice and in accordance with AS/NZS2785:2020.

2. PANEL EDGES

2.1 General

Three edge details available:

1. Plain Square edge
2. Expressed 6mm edge: A black aluminium tongue is factory fitted to one long side and also one short side. See Section 4.2 for details.
3. Expressed 10mm edge: A black aluminium tongue is factory fitted to one long side and also one short side. See Section 4.2 for details.

3. FIXING DETAILS

3.1 General

1. Plain edge panels with no Fixing Rails will be Face Fixed, or fixed through the back of the board for concealed fixing.
2. For Perforated Panels, the Fixing Rails attached to back of panel can be screw fixed through the perforation to the structure or Framing.
3. Aluminium Split Rails are fixed to structure and to back of panel. This provides a concealed fixing method for Plain and Perforated panels for wall applications..

3.2 Suspension Grid & Wall Framing

Armstrong WoodWorks Large Panels for Ceilings and Walls shall be installed on Armstrong Drywall Grid (DGS), which is a Pre-Engineered Suspension and Framing System.

Dry Wall Grid For Ceilings:

DGS Main Bars shall be installed at 1200 mm centres with suspension hangers at 900mm centres along the Main Bar. 1200mm Cross Runners shall be installed at 600mm centres.

Dry Wall Grid For Walls:

Step 1. Locate and fix the Channel Moulding top and bottom.

Step 2. Cut the Short Span 38mm Flat Face Main Bars to

length and install at required centres (to suit your building board); screw fixing to Chanel Mouldings. This method will aid the wall system leveling.

Step 3. Screw brackets to both the structure (as per Design table), and to the ShortSpan Main Bars.

Notes:

1. Refer to the DGS Technical Guide for more details
2. Seismic Design available on request.

4. INSTALLATION

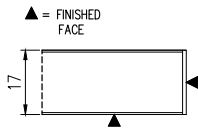
4.1 Cutting the Panel

Cut the panel using standard woodworking tools and techniques, and where possible, use a straight edge. A table saw is recommended for straight cuts and a band saw for curved cuts. In both cases, panels should be cut face up to minimize chipping of the face veneer or melamine.

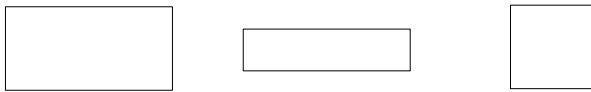
Fine-toothed blades are recommended for finish cuts and will yield the best results.

4.2 System Selection

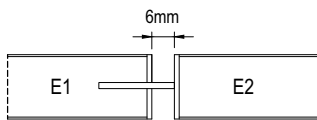
Plain Edge Board: For Face Fixing or Rear Fixing Applications



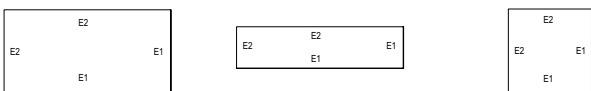
- | | | |
|------------------------------|-----------------------------|------------------------------|
| WLPEF1
2400 x 1200 x 17mm | WLPEF2
2400 x 600 x 17mm | WLPEF3
1200 x 1200 x 17mm |
|------------------------------|-----------------------------|------------------------------|



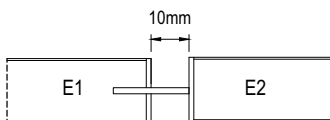
Express 6 Edge: For Fixing Rail or Split Batten Application



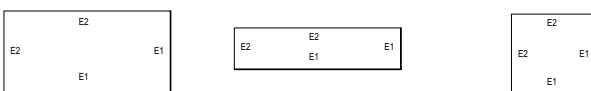
- | | | |
|------------------------------|-----------------------------|------------------------------|
| WLPE64
2400 x 1200 x 17mm | WLPE65
2400 x 600 x 17mm | WLPE66
1200 x 1200 x 17mm |
|------------------------------|-----------------------------|------------------------------|



Express 10 Edge: For Fixing Rail or Split Batten Application



- | | | |
|-------------------------------|------------------------------|-------------------------------|
| WLPE107
2400 x 1200 x 17mm | WLPE108
2400 x 600 x 17mm | WLPE109
1200 x 1200 x 17mm |
|-------------------------------|------------------------------|-------------------------------|



4.3 Fixing System

Method 1: Face or Rear Fixing:

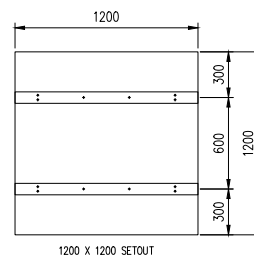
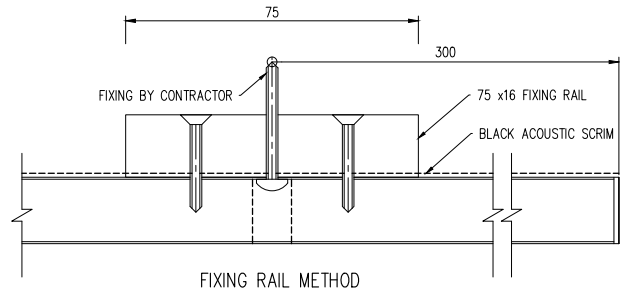
Panels to be screw fixed through panel face, or fixed through the back of the panels to Drywall Grid System for Ceilings or Walls – see section 3.2 for details.

NOTE: Refer to your fixings provider for the correct screws for the application required.

Method 2: Fixing Rails:

Panels have pre-fitted Backing Rails, which enable fixing through the perforations to the wall or ceiling framing or structure.

NOTE: Refer to your fixings provider for the right screws for the application required

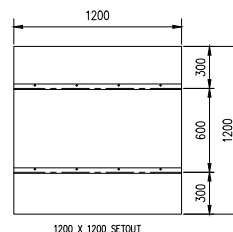
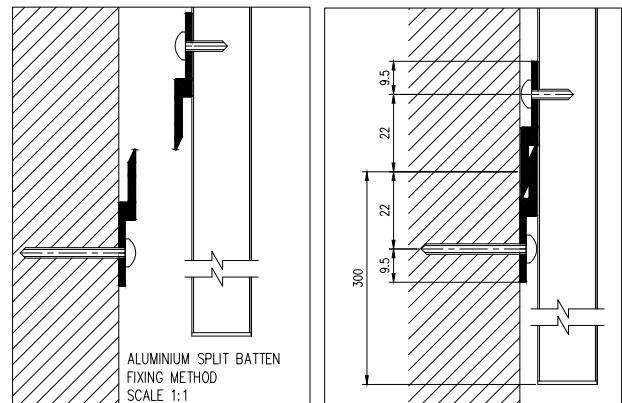


Note: Screw fixing through the perforations into the backing rails and structure must be no greater than 300 mm centres.

Method 3: Split Battens:

Split battens are provided: prefixed to the back of the panels. We also provide loose split battens for site fixing to structure using the details below.

NOTE: Refer to your fixings provider for the right screws for the application required.



Note: Screw fixing through the perforations into the backing rails and structure must be no greater than 300 mm centres.

CAUTION! WOOD DUST. Sawing, sanding, and machining wood products can produce dust. Airborne wood dust can cause respiratory, eye, and skin irritation. Precautionary measures: If power tools are used, they should be equipped with a dust collector. If high dust levels are encountered, use an appropriate NIOSH-designed dust mask.

Avoid dust contact with eyes and skin. First Aid Measure in case of irritation: Flush eyes or skin with water for at least 15 minutes.

5. CLEANING RECOMMENDATIONS

WOODWORKS Large Panels can be cleaned with a soft, dry cloth.

MORE INFORMATION

For complete technical information, detail drawings, CAD design assistance, installation information and many other technical services, call your local Armstrong Ceilings representative.

For the latest product selection and specification data, visit armstrongceilings.com.au

Contact us

NSW/ACT

Armstrong Ceiling Solutions (Australia) Pty. Ltd.
Unit 4, 1 Basalt Road, Pemulwuy NSW 2145
Telephone (02) 9748 1588

VIC/TAS

Armstrong Ceiling Solutions (Australia) Pty. Ltd.
Unit 1, 88 Henderson Road, Rowville VIC 3178
Telephone (03) 8706 4000

QLD / NT

Armstrong Ceiling Solutions (Australia) Pty. Ltd.
6 Barrinia Street, Slacks Creek QLD 4127
Telephone (07) 3809 5565

SA

Total Building Systems Pty. Ltd.
160 Grand Junction Road, Blair Athol SA 5084
Telephone (08) 7325 7555

WA

Ceiling Manufacturers of Australia Pty. Ltd.
3 Irvine Street, Bayswater WA 6053
Telephone (08) 9271 0777

New Zealand

Forman Building Systems Ltd.
27B Smales Road, East Tamaki, Auckland 2013
Telephone 64-9-276 4000

