

WoodWorks and WoodWorks FR Direct Mount Panels

DO NOT REMOVE PRODUCT FROM THE CARTON UNTIL YOU HAVE READ THESE INSTRUCTIONS IN THEIR ENTIRETY.

1. GENERAL

1.1 Product Description

WOODWORKS Large Panels consist of perforated and unperforated, 1200 x 2400, 1200 x 1200 and 2400 x 600 panels designed to be face fixed, concealed fixed to fixing rail or fixed via a split aluminium batten.

1.2 Surface Finish

WOODWORKS Large Panels are made from MR MDF and bonded between two layers of Melamine or Wood Veneer – which has a clear lacquer finish.

All edges are factory finished.

1.3 Storage and Handling

The ceiling components shall be stored in a dust-free and dry interior location and shall remain in crates prior to installation to avoid damage. The crates shall be stored in a flat, horizontal position. The protectors between panels should not be removed until installation. Proper care should be taken when handling to avoid damage and soiling. It is important to ensure that the panels are not subjected to any mechanical influences, such as damage caused by the underlying surface.

Panels must not be exposed to extreme temperatures, for example, close to a heating source or near a window where there is direct sunlight. The installation company is responsible for the careful storage of panels

1.4 HVAC Design & Operation

Proper design for both supply air and return air, maintenance of the HVAC filters and building interior space are essential to minimize soiling. Before starting the HVAC system, make sure supply air is properly filtered and the building interior is free of construction dust.

1.5 Site Conditions: Temperature & Humidity during Installation

Armstrong WOODWORKS ceilings are interior finishes and conditions during the installation should reflect this. Armstrong Ceilings recommends during installation that relative humidity should not exceed 99%, within a temperature range of 0° to 49° C and with the absence of

any “standing water”. Conditions following completion should be maintained as such, including proper ventilation of the plenum in high moisture areas and all windows and doors should remain in place.

Because of the risk of soiling, the installation of WoodWorks Large Panels should only take place after the completion of any work generating large amounts of dust. The wearing of clean gloves is recommended for installation work. The ceiling installer is responsible for the satisfactory installation of the ceiling and adherence to industry best practice and in accordance with AS/NZS2785:2020.

2. PANEL EDGES AND EXPRESS JOINTS

2.1 Panel Edges

All Direct Fix Panels have Square Edge profiles and are banded with the same finish as the panel face.

2.2 Express Joints

All Joints between panels are expressed joints. Joint widths to suit architectural requirements, see detail below.

3. FIXING SYSTEMS

3.1 General

All Direct Mount Panels are fixed to suitable engineered support structure such as Armstrong DGS Grid or steel framing systems engineered by others.

3.2 Fixing Methods

Panels are fixed to the support structure using the following three Methods.

1. Face or Rear Fix Method – mainly used in fixing non-perforated panels to support.
 - a. Face Fix – for direct fixing of panel to support
 - b. Rear Fix – for concealed fixing of panel through the back of board to the support structure
2. Fixing Rail Method – used for perforated panels. The fixing rail is attached to back of the panel, the panel is then screw fixed through the perforation to the framing structure.
3. Split Batten Method – Concealed fixing method suitable for perforated and non-perforated panels in wall applications. Aluminium Split Rails are fixed to the structure and to the back of the panel.

3.3 Suspension Grid & Wall Framing

3.3.1 General

Armstrong Woodworks and Woodworks FR Direct Mount Panels for Ceilings and Walls shall be installed on the following suspension and framing systems:

1. Armstrong Drywall Grid (DGS), which is a Pre-Engineered Suspension and Framing System or
2. Suitably Engineered Suspension and framing system designed to accommodate all loads in accordance with AS/NZ 1170.0, AS/NZS 1170.1, AS/NZS 1170.2, AS/NZS 1170.4, NZS 1170.5, AS/NZS 2785.

3.3.2 Dry Wall Grid For Ceilings:

DGS Main Bars shall be installed at 1200 mm centres with suspension hangers at 900mm centres along the Main Bar. 1200mm Cross Runners shall be installed at 600mm centres.

3.3.3 Dry Wall Grid For Walls:

Step 1. Locate and fix the Channel Moulding top and bottom.

Step 2. Cut the Short Span 38mm Flat Face Main Bars to length and install at required centres (to suit your building board); screw fixing to Chanel Mouldings. This method will aid the wall system leveling.

Step 3. Screw brackets to both the structure (as per Design table), and to the ShortSpan Main Bars.

NOTE:

1. Refer to the DGS Technical Guide for more details
2. Seismic Design available on request.

4. INSTALLATION

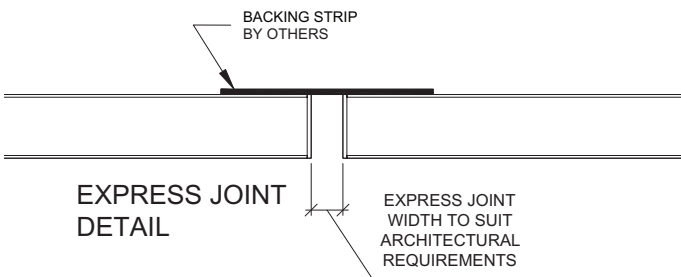
4.1 Cutting the Panel

Cut the panel using standard woodworking tools and techniques, and where possible, use a straight edge. A table saw is recommended for straight cuts and a band saw for curved cuts. In both cases, panels should be cut face up to minimize chipping of the face veneer or melamine.

Fine-toothed blades are recommended for finish cuts and will yield the best results.

4.2 Express Joints

Express joints to be install and constructed in accordance with project's Architectural requirements.



4.3 Panel Installation and Fixing

4.3.1 Method 1: Face or Rear Fixing:

Panels to be screw fixed through panel face, or fixed through the back of the panels to Drywall Grid System for Ceilings or Walls – see section 3.2.

NOTE:

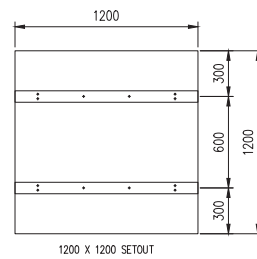
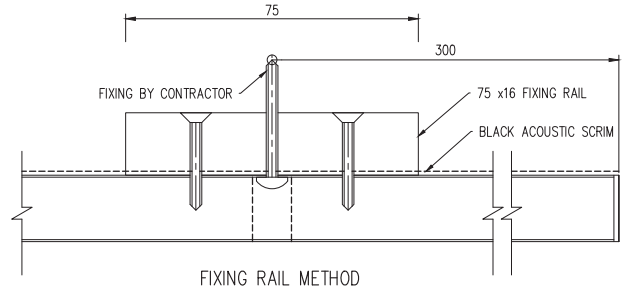
Refer to your fixings provider for the correct screws for the application required.

4.3.2 Method 2: Fixing Rails:

Fixing or Backing Rails enable fixing of panels through perforations to the wall or ceiling framing structure.

NOTE:

1. Refer to your fixing provider for the right screws for the application required.
2. Backing Rails can be supplied pre-fitted to the panel on request.



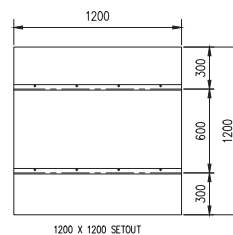
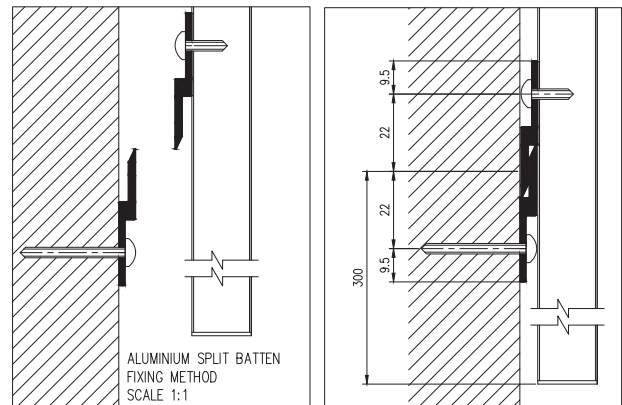
Note: Screw fixing through the perforations into the backing rails and structure must be no greater than 300 mm centres.

4.3.3 Method 3: Split Battens:

Split battens allow for concealed fixing of wall panels to the support structure as per details below.

NOTE:

1. Refer to your fixing provider for the right screws for the application required.
2. Aluminium split battens can be supplied pre-fixed to the back of the panel on request.



Note: Screw fixing through the perforations into the backing rails and structure must be no greater than 300 mm centres.

CAUTION! WOOD DUST. Sawing, sanding, and machining wood products can produce dust. Airborne wood dust can cause respiratory, eye, and skin irritation. Precautionary measures: If power tools are used, they should be equipped with a dust collector. If high dust levels are encountered, use an appropriate NIOSH-designed dust mask.

Avoid dust contact with eyes and skin. First Aid Measure in case of irritation: Flush eyes or skin with water for at least 15 minutes.

5. CLEANING RECOMMENDATIONS

WoodWorks and Woodworks FR Direct Mount Panels can be cleaned with a soft, dry cloth.

MORE INFORMATION

For complete technical information, detail drawings, CAD design assistance, installation information and many other technical services, call your local Armstrong Ceilings representative.

For the latest product selection and specification data, visit armstrongceilings.com.au

Contact us

NSW/ACT

Armstrong Ceiling Solutions (Australia) Pty. Ltd.
75 Long Street, Smithfield, NSW, 2164
Telephone (02) 9748 1588

VIC/TAS

Armstrong Ceiling Solutions (Australia) Pty. Ltd.
Factory 5, Soccio Place, 205-233 Abbots Road,
Dandenong South, VIC 3175
Telephone (03) 8706 4000

QLD / NT

Armstrong Ceiling Solutions (Australia) Pty. Ltd.
18-24 Beal Street, Meadowbrook, QLD 4131
Telephone (07) 3809 5565

SA

Total Building Systems Pty. Ltd.
160 Grand Junction Road, Blair Athol, SA 5084
Telephone (08) 7325 7555

WA

Ceiling Manufacturers of Australia Pty. Ltd.
3 Irvine Street, Bayswater, WA 6053
Telephone (08) 9271 0777

New Zealand

Comfortech Building Systems Ltd.
27B Smales Road, East Tamaki, Auckland 2013
Telephone 64-9-276 4000

